

Corrosion-proof and
resistant to acids and salts

Lubrication nipple on
all moving parts for
long service life

Electric lift (AMX I10e)

Glass bead blasted surfaces
for straightforward cleaning

Robust and reliable



AMX I10/I10p/I10e/I10ep

Stainless steel scissor lift hand pallet truck (1,000 kg)

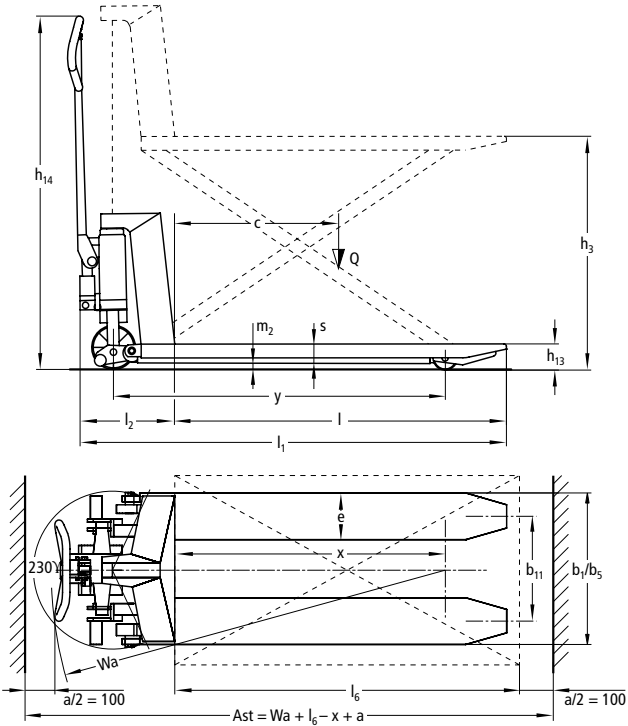
The Inox versions of the AMX I10 / I10e scissor lift hand pallet trucks are ideal for transporting goods in areas where absolute hygiene is required. The advantages of the stainless steel range come to the fore in damp and harsh

environments. Individually adaptable to the application at hand, it is possible to choose from a number of different versions. Jungheinrich's decades of experience in stainless steel hand pallet trucks are reflected

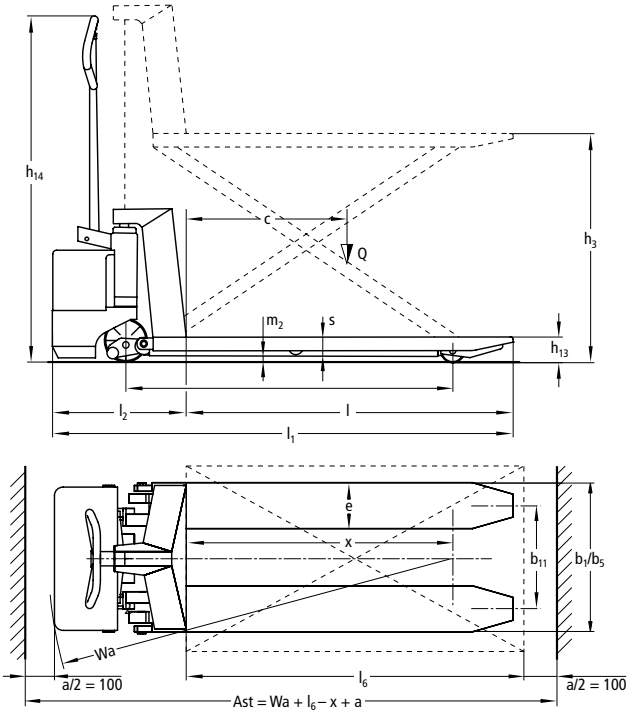
today in its completely reliable and robust trucks. In meat or fish processing, the chemical or pharmaceuticals sectors, scissor lift hand pallet trucks offer the right solution.

AMX I10/I10p/I10e/I10ep

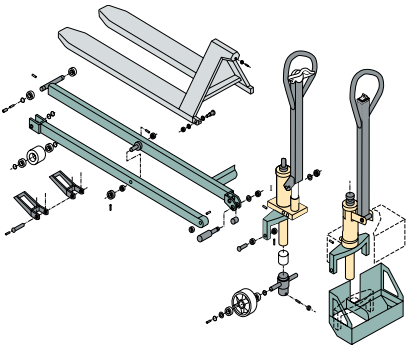
AMX I10/ I10p



AMX I10e/ I10ep



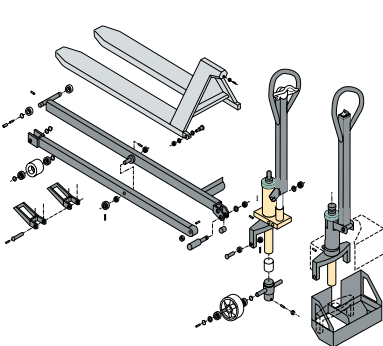
AMX I10/I10e



Right tiller figure is for the E model

- Electro plating
- Chromite coating
- Stainless steel (AISI 303/304)
- Acid resistant stainless steel (AISI 316)

AMX I10p/I10ep



Right tiller figure is for the E model

Technical data in line with VDI 2198

Identification	1.1	Manufacturer (short form)		Jungheinrich			
	1.2	Model		AMX I10	AMX I10p	AMX I10e	AMX I10ep
	1.3	Drive		manual	manual	Electrics	Electrics
	1.4	Manual, pedestrian, stand-on, seated, order picker operation		hand			
	1.5	Load capacity/rated load	Q t	1			
	1.6	Load centre distance	c mm	600			
	1.8	Load distance	x mm	925			
	1.9	Wheelbase	y mm	1140			
Weights	2.1	Service weight	kg	108	108	140	140
	2.2	Axle load, w. load, front / rear	kg	750 / 358	750 / 358	753 / 357	753 / 387
	2.3	Axle load, w.o. load, front / rear	kg	38 / 70	38 / 70	40 / 100	40 / 100
Wheels / chassis	3.1	Tyres		N;V			
	3.2	Tyre size, at front	mm	Ø 150x45			
	3.3	Tyre size, at rear	mm	Ø 80x60			
	3.5	Wheels, number front/rear (x = driven wheels)		2/2			
	3.6	Track width, front	b ₁₀ mm	145			
	3.7	Track width, rear	b ₁₁ mm	440			
	4.4	Lift	h ₃ mm	710			
Basic dimensions	4.9	Height of tiller in drive position min. / max.	h ₁₄ mm	1195			
	4.14	Standing height raised	h ₁₂ mm	800			
	4.15	Lowered height	h ₁₃ mm	90			
	4.19	Overall length	l ₁ mm	1480	1480	1580	1580
	4.20	Length incl. back of forks	l ₂ mm	340	340	440	440
	4.21	Total width	b ₁ /b ₂ mm	540			
	4.22	Fork dimensions	s/e/l mm	50 / 163 / 1140			
	4.25	Width over forks	b ₅ mm	540			
	4.32	Floor clearance centre wheelbase	m ₂ mm	28			
	4.33	Aisle width for pallets 1000 x 1200 sideways	Ast mm	1770	1770	1830	1830
	4.34	Aisle width for pallets 800 x 1200 lengthways	Ast mm	1830	1830	1890	1890
	4.35	Turning radius	W _a mm	1355	1355	1415	1415
Performance data	5.3	Lower speed, w. / w.o. load	m/s	0.15 / 0.09	0.15 / 0.09	0.08 / 0.05	0.08 / 0.05
Electrics	6.4	Battery voltage/nominal capacity K5	V/Ah			12 / 60	12 / 60
	6.5	Battery weight	kg			20	20

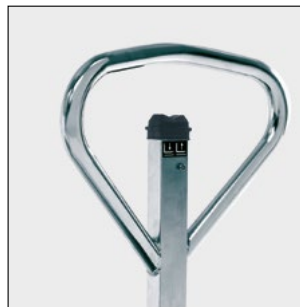
Benefit from the advantages



AMX I 10 controls



Enclosed fork tips



AMX I10e control

Easy handling

- Smooth controls for both left and right-handed operators.
- Special lowering valve for sensitive, controlled load lowering.
- Short front end dimension (340 mm) ensures safe operation even in confined spaces.
- Skids on the fork tips allow for easy pallet handling.

Optimum hygiene

- The enclosed fork tips ensure that no dirt sprays up from the fork rollers onto the load during travel.

- Freely accessible or fully enclosed cavities allow for effective cleaning with no "hiding places for bacteria".
- Grease nipples on critical moving parts.
- Food grade lubricant (class H1 and H2).

Lift height:

Extra standing legs offer good stability up to a height of 800 mm.

Effortless lifting and lowering

- Option of manual hydraulic (AMX I10) or electro-hydraulic (AMX I10e) with 1.1 kW lift motor.
- Integrated pump unit with reservoir.

- Sensitive lowering with hand lever. The lowering valve is incorporated in the pump unit. The hydraulic system is protected against overloading by a pressure relief valve.

Forks

Robust, torsion-resistant construction with closed fork tips.

Maintenance-free battery and built-in charger (AMX I10e)

- Built-in electronically controlled battery charger.
- Charging possible at any 240-V mains socket.
- Maintenance-free 60 Ah battery.

Jungheinrich UK Ltd.

Head Office:
Sherbourne House
Sherbourne Drive
Tilbrook
Milton Keynes MK7 8HX
Telephone 01908 363100
Fax 01908 363180

info@jungheinrich.co.uk
www.jungheinrich.co.uk

The German production facilities in Norderstedt and Moosburg are certified. **ISO 9001**
ISO 14001

Jungheinrich fork lift trucks meet European safety requirements.



JUNGHEINRICH
Machines. Ideas. Solutions.