

# FASTRAX® CLEAN

## HIGH-PERFORMANCE DOORS

### Simple, reliable FasTrax design

Single operational platform,  
Traxion Drive System,  
TRUE Auto Re-feed™ and  
Soft-Edge™ Technology.

### Speed runs in the family

Operating speeds up to  
100"/second, twice as  
fast as most competitive  
clean doors.

### Worry-free washdown

Withstands high-pressure  
washdown with the harshest  
cleaning chemicals.

### One piece radial header

Machined from a solid  
block of UHMW plastic  
to meet USDA and FDA  
standards. Optional track  
configurations available.

### Noncorrosive Lexan and UHMW side frames

Easily removable for  
deep cleaning.

### Drive system and controls

Designed for heavy  
washdown.

### Resistant door fabric

Polypropylene fabric  
provides higher resistance  
to acids and bases, lower  
water absorption rates and  
higher resistance to mold  
than vinyls or urethanes.



Radial Lift

## FASTRAX CLEAN HIGH-PERFORMANCE DOORS

The most reliable door just became the cleanest.  
Rite-Hite's FasTrax Clean is a full 360°, washdown clean.



Radial header



Easy to remove side frame



Optional stainless drive system

## Speed

Peak speed up to 100"/second with standard variable frequency drive. Top speed is dependent on door size. Closing speed 20"/second.

## Size

Minimum – 5'0" w x 7'0" h (1524 mm x 2134 mm)  
Maximum – 10'0" w x 12'0" h (3048 mm x 3658 mm)

## Curtain material

DuraMax 100 mil.  
Standard colors: blue, orange, green, gray, red and white

## Side frames

Stainless steel frame and brackets, Lexan track, UHMW insert.

## Drive systems

Epoxy painted motor, brake, gearbox, 2HP motor and variable frequency drive. Optional stainless steel motor assembly recommended if caustic or harsh chemicals will be utilized for washdown.

## Electrical requirements

Single-phase: 220V – 240V  
Three-phase: 208V, 230V, 400V, 460V, 575V

## Control box

i-COMM™ Digital Controller, variable-frequency drive.  
Standard fiberglass NEMA 4X, optional stainless steel NEMA 4X.

## Curtain retention

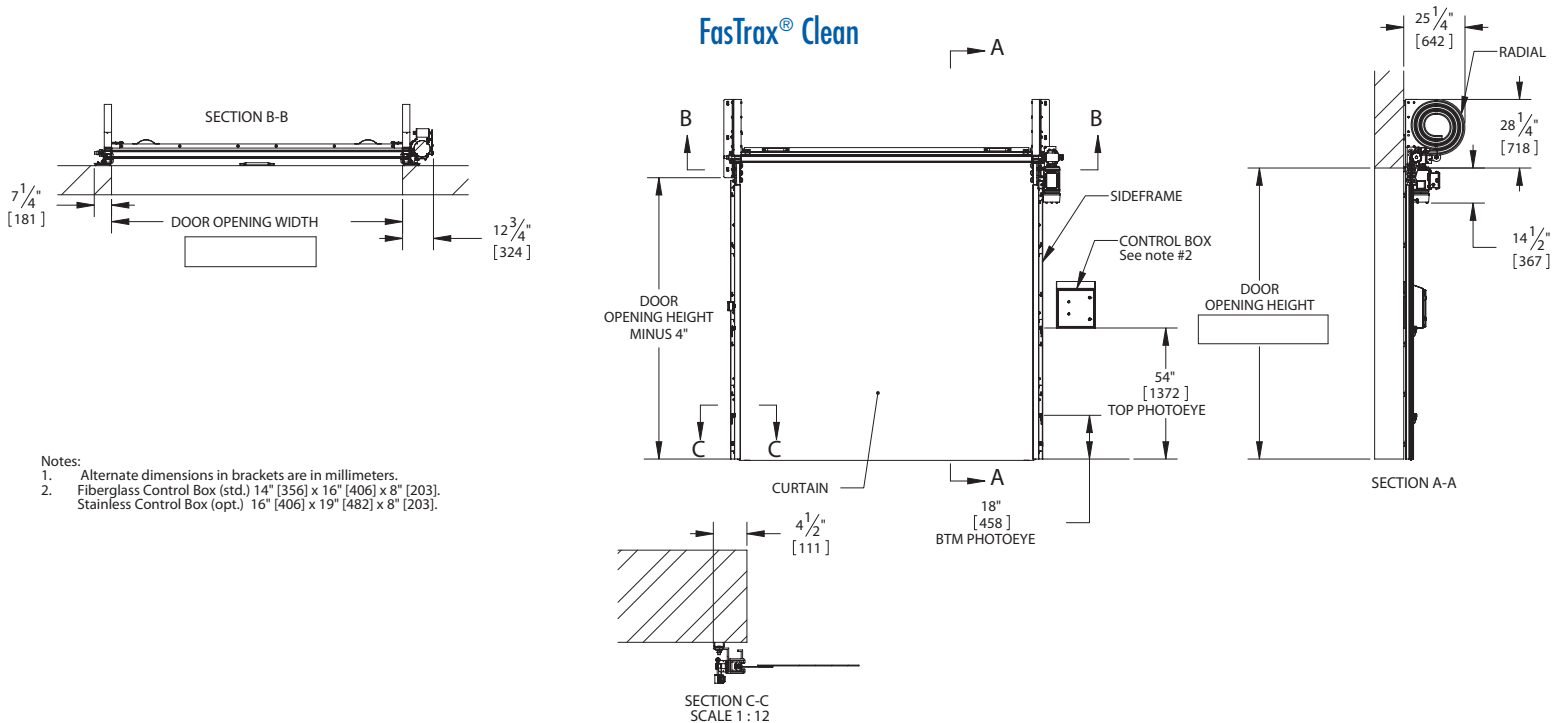
Under pressure, Lexan extrusions keep tension on the curtain the entire length of the side frame. Includes TRUE Auto Re-feed system in case of accidental impacts to curtain.

## Safety features

Soft-Edge Technology, two thru-beam photo eyes mounted at 18" (457mm) and 54" (1372 mm) from the floor.

## Warranty

Limited one-year parts and labor on all components, including electrical. Rite-Hite Doors also offers an exclusive one-year money-back guarantee of customer satisfaction.



### Rite-Hite Corporation

8900 North Arbon Drive Milwaukee, WI 53223 USA (414) 355-2600 (800) 456-0600 FAX: (414) 355-9248  
Mailing Address: Rite-Hite Corporation P.O. Box 245020 Milwaukee, WI 53224 USA

[www.ritehite.com](http://www.ritehite.com) [www.ritehitedoors.com](http://www.ritehitedoors.com)